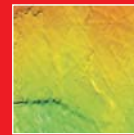
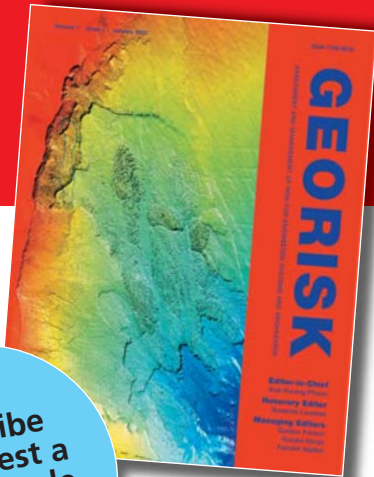


# Call For Papers

# GEO RISK

## ASSESSMENT AND MANAGEMENT OF RISK FOR ENGINEERED SYSTEMS AND GEOHAZARDS



Subscribe  
or request a  
FREE sample  
copy today!

### EDITOR-IN-CHIEF

**Kok-Kwang Phoon**, Faculty of Engineering,  
National University of Singapore, Singapore  
[cvepkk@nus.edu.sg](mailto:cvepkk@nus.edu.sg)

### HONORARY EDITOR

**Suzanne Lacasse**, Norwegian Geotechnical Institute,  
Oslo, Norway  
[suzanne.lacasse@ngi.no](mailto:suzanne.lacasse@ngi.no)

### MANAGING EDITOR (AMERICA)

**Gordon Fenton**, Dalhousie University, Halifax, Canada  
[gordon@random.engmath.dal.ca](mailto:gordon@random.engmath.dal.ca)

### MANAGING EDITOR (ASIA)

**Yusuke Honjo**, Gifu University, Gifu, Japan  
[honjo@cc.gifu-u.ac.jp](mailto:honjo@cc.gifu-u.ac.jp)

### MANAGING EDITOR (EUROPE)

**Farrokh Nadim**, International Centre  
for Geohazards, Oslo, Norway  
[Farrokh.Nadim@ngi.no](mailto:Farrokh.Nadim@ngi.no)

### Further Information

To receive information on forthcoming articles  
in advance of publication, register for our free  
contents alerting services at:

[www.informaworld.com/alerting](http://www.informaworld.com/alerting)

In 2007 Taylor & Francis are proud to launch **Georisk**, an exciting new journal within the field of geoscience and geotechnology. The main aim of **Georisk** is to provide a multi-disciplinary scientific forum for the cross fertilization of ideas between parties involved in all aspects of georisk. The journal is concerned with the uncertainties associated with geomaterials (soils, rocks) and geologic processes, and the role these play in the risk assessment and management of engineered and natural systems. Significant theoretical and practical challenges remain on quantifying these uncertainties and developing defensible risk management methodologies that are acceptable to decision makers and stakeholders.

The Editors welcome papers covering many diversified but interlinked areas of active research and practice, including geohazards (earthquakes, landslides, avalanches, tsunamis, etc.), the safety of engineered systems (dams, buildings, offshore structures, lifelines, etc.), environmental risk, reliability-based design and code calibration, geostatistics, decision analyses, structural reliability, maintenance and life cycle performance, hazard mapping, remote sensing, and other related disciplines.

### Submissions

All submissions should be made online at the **Georisk** Manuscript Central™ site: <http://mc.manuscriptcentral.com/ngrk>

New users should first create an account. Once a user is logged onto the site submissions should be made via the Author Centre. Submissions should be created using a standard word processing program, such as MSWORD or PDF. Files created using LaTeX should be converted to PDF or Postscript before uploading.

For full instructions on how to submit a paper go to [www.informaworld.com/georisk](http://www.informaworld.com/georisk) and click on the **Instructions for Authors** tab.

To request an online sample copy of the first issue go to:  
[www.informaworld.com/georisk](http://www.informaworld.com/georisk)



Taylor & Francis  
Taylor & Francis Group

