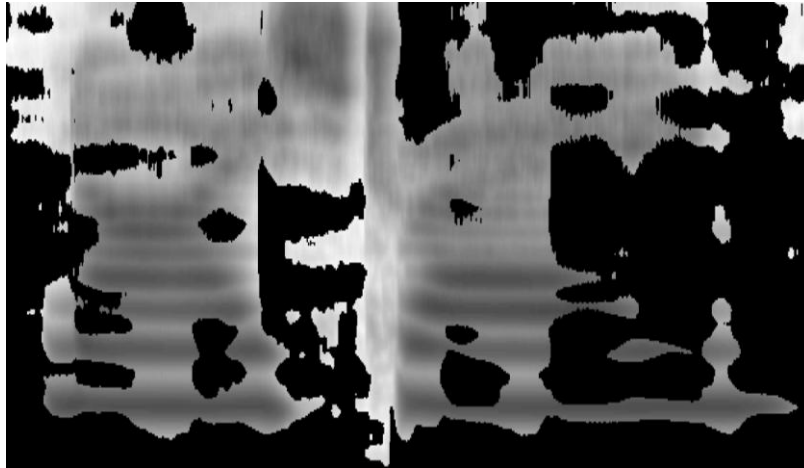




Special Issue Call For Papers

Title: Speech Recognition in Adverse Conditions

Guest editors: Sven Mattys, Ann Bradlow, Matt Davis, and Sophie Scott



*Glimpses of speech through babble noise.
Courtesy Martin Cooke.*

Call for papers:

Manuscripts on **Speech Recognition in Adverse Conditions** are now sought for a joint special issue of *Language and Cognitive Processes* and *Cognitive Neuroscience of Language*. This special issue is a unique opportunity to promote the development of a unifying thematic framework for understanding the perceptual, cognitive and neuro-physiological mechanisms underpinning speech recognition in adverse conditions. In particular, we seek papers focusing on the recognition of acoustically degraded speech (e.g., speech in noise, “accented” or motor-disordered speech), speech recognition under cognitive load (e.g., divided attention, memory load) and speech recognition by theoretically relevant populations (e.g., children, elderly or non-native listeners). We welcome both cognitive and neuroscientific perspectives on the topic that report strong and original empirical data firmly grounded in theory.

Submission:

Manuscripts should be submitted by **Tuesday 30th November, 2010**.

Please submit an electronic copy of your manuscript through our online submissions website <http://mc.manuscriptcentral.com/plcp> selecting ‘**Speech Recognition in Adverse Conditions**’ as the manuscript type. Your submission should be a single .doc or .pdf file and include a cover letter clearly indicating that your submission is to be considered for the special issue.



For further information, or if you have any questions about suitability of your work, please contact the journals administrator Marie Dixon at (csadmin@cs1.psychol.cam.ac.uk)